

The Poop Scoop



Free Newsletter No. 17, February 2020

The Scoop

What is a "Pit Bull" and why is there so much drama surrounding them? In NZ this can be a little confusing. We have "pitbull types" and then we have the American Pit Bull Terrier (APBT). Depending on your council, Staffordshire Terriers, American Staffordshire Terriers and Staffordshire Bull Terriers can be lumped in the "pit bull type" group along with the APBT, despite being completely separate breeds.

We recently purchased some Embark Dog DNA tests. They are the leading health and DNA tests available on the market for dogs and they have the largest breed database around - including the American Pit Bull Terrier.

In NZ, a dog has to be "predominantly pit bull" to be classified as menacing by breed. Our embassa-dog Gibbs is already classified, so we had the hope that maybe if he was less than 51%, we could get his classification reversed! Unfortunately for Gibbs his DNA test revealed he was in fact 75% APBT - so he's even more menacing than we thought.

We welcomed our followers to have their dogs done and share the results with us. We were not disappointed! "Charli" came back 100% APBT. That's a purebred American Pit Bull Terrier. The best part of this is, going off her looks, you would never pick this. So she is in fact registered as a mastiff x. She has never been in trouble, never had any issues and is - surprise surprise

- just a normal happy go lucky dog who is lucky enough not to have a classification on her demanding she wear a muzzle in public.

So we're getting pit bulls that we didn't think we've had any APBT DNA at all, turn out to have lots. And we are getting dogs that we thought were mostly APBT turn out to have none or very little in them.

What does that tell us about just how 'menacing' these dogs are? And why are the so called "breed experts" in the councils able to single these dogs out?

If we can't tell what is a pitbull and what isn't, and the ones that ARE are actually really lovely well rounded and social dogs - why are these dogs and their responsible owners being vilified with menacing classifications?

All over the world countries are changing their laws after years and years of persecuting and executing pit bulls. Scientific data and research has shown that Breed Specific Legislation does absolutely ZERO towards lowering dog bite stats. Dog owner education and promoting and enforcing responsible dog ownership has always been the way to go.

Please write to your local MP and make sure that they are aware of this, without your voice, this will never change.

Abbey van der Plas

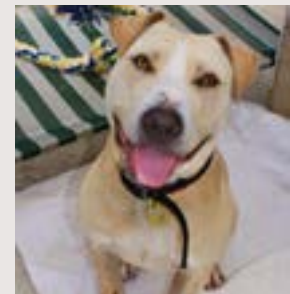
Note: If you would like to get your dog DNA tested, we have a few kits left for sale. Pick up at the rescue or order through our web page.



Charli



Gibbs



Dog of the Month

Buster

Buster is around 7 months old & a mixed breed boy, possibly English Bull Terrier/Labrador, but has been registered as APBT. We are in the process of trying to get this classification reversed, as it is obvious he is not an APBT.

He came to us with a nasty infection in his leg & a hole in the bone. He is still in a recovery stage, but it is healing very well. He is still on medication for the infection & if surgery is required this is something that CBRR will cover.

He LOVES other dogs, loves to play & to hang out with them. He has great dog manners around playing, but will still need an owner that can polish is play interactions & excitement seeing other dogs out & about.

Buster has not had a lot of training so still has a lot of puppy behaviours. When he gets excited he is jumpy & often mouthy. This is a behaviour that can be quickly resolved in a home environment with consistent training from an owner.

All our dogs are destined to be family dogs that sleep indoors with the rest of the family. Buster is desexed, vaccinated, chipped & registered.

Welcome

What a cracker edition we have for you this time. It's full of news, the last part of our Stages of Life series, LOADS of recently adopted dogs (YAY!) and all the pictures you could ask for.

This time, the Science Corner will take a break to introduce our brand new Virtual Adoption programme. Have a read, maybe a doggie pen pal is what you didn't know you were missing in life.

CBBR's Virtual Adoption Programme

What is Virtual Adoption?

Our Virtual Adoption Programme is an opportunity to support one of the dogs in our care. Choose a dog, sign up, and you'll get online updates and other benefits (see below) for as long as you choose to participate. If your dog gets adopted, we will let you know. After their successful trial period, we'll send you a final update so you can see how they're doing in their new, forever home. You can then choose to support another one of the dogs in the programme!

Why Virtual Adoption?

We know that not everyone who would love to help has the time or ability to volunteer - the Virtual Adoption programme gives the community a chance to be actively involved in another vitally important way. By supporting the programme with a weekly donation, you enable us to invest more resources into recovery and training, giving the dogs a better life even before they find their forever homes.

Many people are not in the position to adopt. Whether you rent, already have pets, or have allergies - Virtual Adoption connects you with a dog who needs your support. It's the perfect way of being actively involved in supporting our dogs, even if your location or situation would otherwise prevent it.

Virtual Adoption can be gifted. A pet is for life - which is why surprising somebody with one isn't always a good idea. Through Virtual Adoption, you can safely surprise someone with a connection to a dog in our care. This includes gifting to young people who cannot adopt!

Virtual Adoption allows the dogs to have more of a presence in the community. It can be all too easy for rescues to fall through the cracks; they become anonymous, part of a larger issue in which they're just a statistic. But, with your help, your Virtual Adoptee has more opportunity to find their forever home! With you introducing them to your friends and family, more people will see what makes that particular dog special. The

truth of the individual dog's heart and personality being seen by the right person is all that's needed for them to find their happy ever after, and you can be a vital part of that.

And here is the deal:

For \$20 or more per week you get:

A personalised email from your adoptee about their week, an unpublished picture (both weekly) and a calendar (at the beginning of the year)

For \$50 or more per week you get:

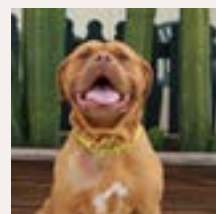
A personalised email from your adoptee about their week, two unpublished pictures and an unpublished video per week, and a calendar (at the beginning of the year)

For \$100 per week or more you get:

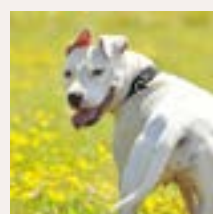
A personalised email from your adoptee about their week, two unpublished pictures, two unpublished videos per week, and two calendars (at the beginning of the year). You also get up to three face-to-face visits with your adoptee per year!!!

Would you like to meet the dogs in our Virtual Adoption Programme?

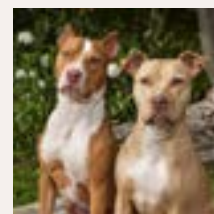
Well of course you do! And here they are:



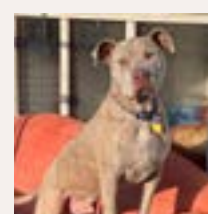
Belle



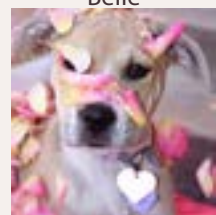
Lexi



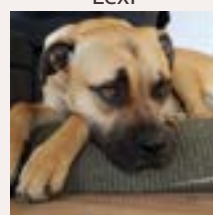
Heath & Sunshine



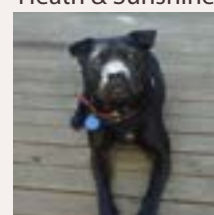
Samson



Potluck - any dog



Harry



Alley

For their story and background, please go to

<https://www.chchbullbreedrescue.org.nz/Information/virtual-adoption/> and click on the picture of each dog.

You can also email us at dogs@chchbullbreedrescue.org.nz

Doggie Tails

Stages of Life

There are certain issues we expect to have that are due primarily to the age and life stage of a dog. We often get questions on why a puppy or dog is showing a certain behaviour and what training we recommend to harmoniously work through this phase with the dog. In this series, we will explain the different life stages a dog goes through and how to make sure you and your dog get the best out of it.

Part 4: Adulthood:



Maturity starts around 12 to 18 months, but it does depend on size and breed. This is when you start to feel like you have a lovely dog again, one that you can hang out with and enjoy each others company. That unruly animal that wouldn't listen to you anymore, that was doing all those unwanted behaviours you thought you got rid of at puppy stage, they all start to settle down and training starts to fix. It is no longer like having a teenager in the house! I was so pleased when we reached this stage with my current dog, even with great training in place prior to adolescence phase, we had quite a battle of wills for a good year. Neza is now the most amazing, loving dog I could ask for but when you are in adolescence phase you can feel like there is no end in sight with this holy terror in your house!

All the ways to reach us

1 Barton Street, Woolston, Christchurch

Email: admin@chchbullbreedrescue.org.nz www.chchbullbreedrescue.org.nz

Social media: www.facebook.com/ChristchurchBullBreedRescue/; www.instagram.com/chchbullbreedrescue/



Old Age:

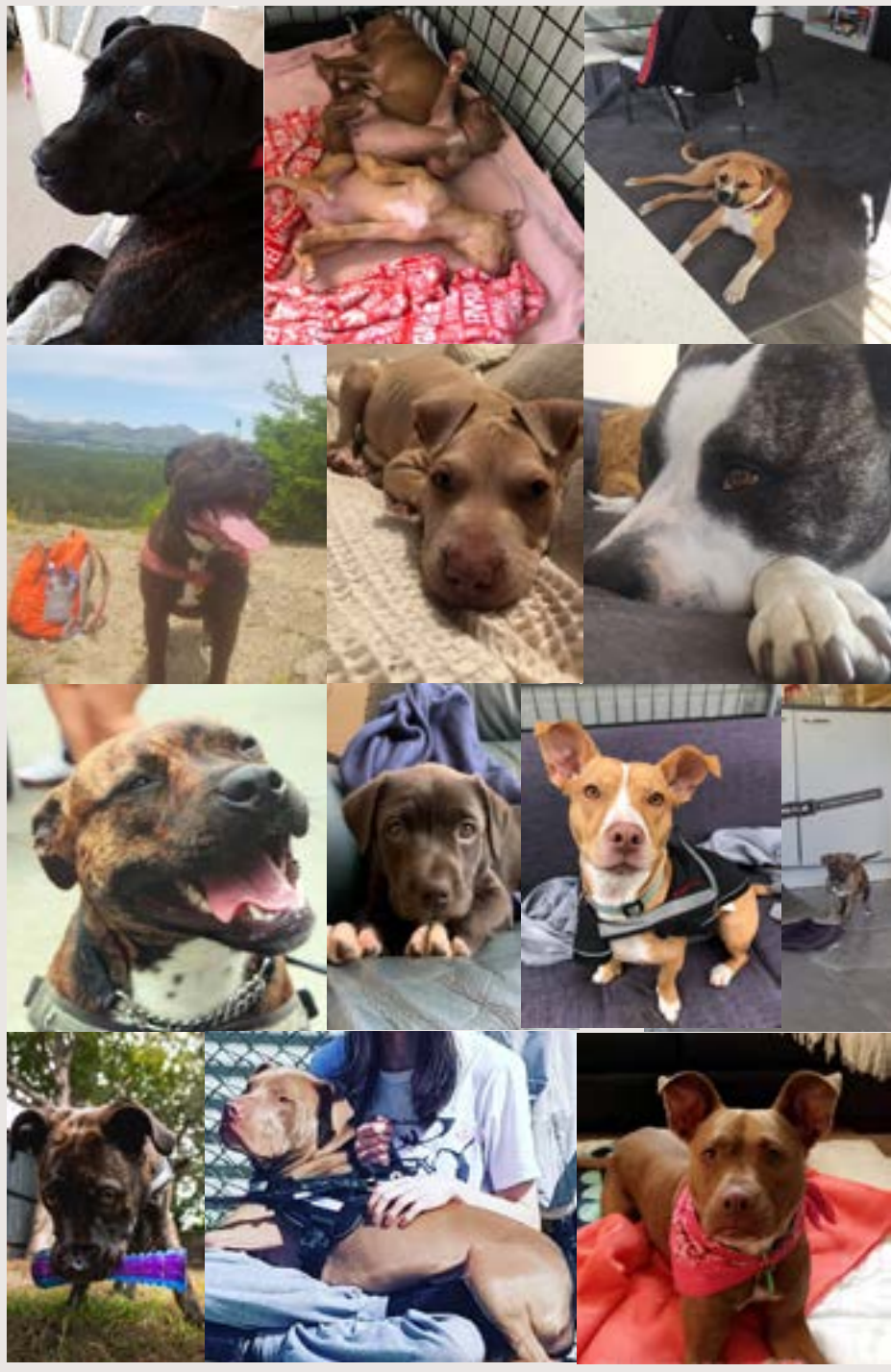
Our old dogs are wonderful, they are such a blessing to have in our lives, but our old dogs do have a completely different set of needs to any other life stage. They may still love the idea of getting out for a walk but then realise they are not up to it and just want to stand at the end of driveway, to watch the world go by and sniff the air. On the other hand, they could still be very active but end up with sore joints and limping the next day if they overdo it. We need to be aware of their limitations and ensure they are not overdoing it or we are not pushing them to do things they should not really be doing. If we stand at the driveway for 20 minutes just hanging out, to me that is 20 minutes well spent! If our old dog doesn't realise that hooning around like a 5 year old when they are out on a walk, or going out for a walk that too long, even if they are up to it, that it will have consequences the next day, or for days later, we need to be their limiter on the amount of exercise they should be having and work out what their old bones can handle. Our oldies are prone to far more health issues, most commonly joint issues. There are so many great products available in either diet specific food or supplements that we can give them to ease any discomfort and give them a better quality of life.

They may just want to follow the sun around the house or yard and snooze for 90% of the day. They have been a constant companion for all their life so they deserve all the rest they want in comfy beds and all the luxuries life can give in this this stage. There can be a deterioration in toileting as they lose control of their muscles. Our oldies will feel quite upset about making a toileting mistake inside, so we never tell them off for this, we tell them it's ok in a quiet, calm voice and clean it up. We take them outside to toilet more often and create a place that when they are home alone, that they can go to the toilet inside without trying to hold on.

Another health issue that can occur are cognitive issues such as dementia. When our old dogs start spacing out, forget what they were doing, repeat the same thing, starting to have obsessive behaviours or a marked change in temperament, these things can be unsettling for owners but also for the dog. I would always consult the veterinarian over possible options to help, aid and support our old dogs through this. My old boy Jake lived to the ripe old age of 17, for the last 2 years of his life my bed was taken down and we slept on a mattress on the floor. He had slept on my bed all his life, when we could no longer jump up or safely get down, it was a no brainer for me. He WANTED to be on my bed, that was his happy, safe, warm place, so we slept on the mattress on the floor. I can say that after 2 years I was pretty over it, but these are the things we do for our companions!



We found our forever homes



Weird Dog Fact

In 2018, there were about 900 million dogs on Earth.



Upcoming events

We have a few events coming up and would love for you to join us:

29.2.2020 our THIRD POKER RUN!

Pre-Registration Tickets \$20, or \$25 on the day. Start of registration at 10am at the Rescue. For all the details check out our Facebook page.



01.03.2020 Swannanoa Country Fair. We'll have loads of merch for you and plenty of great deals!

22.3.2020 We will join the team from The Barkery at the Arts Centre for a doggie related market and guided walk



If you would like to make a donation, there are several ways to do so:

Directly into our Trust account - Christchurch Bull Breed Rescue Trust 38-9016-0659994-00

Directly into our vet account - Avonside Wainoni Vet Clinic - Ref - 11751 - 06 0829 0207978 00

Give A Little - <https://givealittle.co.nz/org/bullbreedrescue>

Fill in the form below & send in a payment to us at 1 Barton Street, Woolston, Christchurch

As we are a registered charity, we are able to offer receipts for tax purposes, so please let us know if you require a receipt for payments made in any of the above ways

Name: _____ Address: _____ Email: _____

Payment made into an account: _____

Payment attached: Y/ N Receipt Required Y/N Receipt: Emailed / Posted